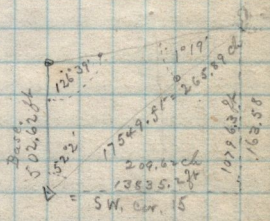


April 16-1888

Survey in T1S R6E, on Running N. on line between  
 Secs 15-16. Beginning at <sup>base</sup> sandstone boulder  
 7" x 12" x 5" on west side of Nelson River, old wagon  
 Road 2.25 chains South runs N E & S W  
 Rock marked 3 notches on E. & 3 notches on S.  
 Var. N 76° 15' E; to 1/4 cor 1/2 mile north.  
 from S.W. cor 15 - a lone pine tree bears N. 52° 02' E;  
 and fr north the same tree bears S 126° 39' E.

log sin 1° 19' = 8.361315  
 as " = 1.638685  
 log sin 126° 39' = 9.904335  
 " 502.62 ft = 2.701239  
 17549.23 = 7.244259



1/4 cor on E. line Sec 16 - W. line 15 =  
 red sandstone. 28" x 14" x 8" marked for 1/4 Sec cor.  
 on Eastern slope of side hill at mouth of White's Canon  
 3 ch. west of creek.

2 miles 79.64 ch North and 3 miles 1.22 chains East  
 from S.W. cor Sec 15

log sin 3° 49' = 8.823240  
 as " = 1.176760  
 log 77° 47' = 9.990052  
 " 370.25 = 2.568494  
 5436.3 = 3.735306

